



ND

Luxembourg-Poland
Business Conference
**Partnership
in space business**

Conference Guide

5 December 2019 | Luxembourg Embassy in Warsaw



Luxembourg-Poland
Business Conference
**Partnership
in space business**

HONORARY PATRONAGE:

Ministry of the Economy of the Grand Duchy of Luxembourg
Ministry for Economic Development of the Republic of Poland

The aim of the conference

to review

the state of bilateral cooperation

to bring together

companies and experts from the space industry, as well as from the finance and public sectors from Luxembourg and Poland in order to discuss issues related to the development of the space technology as a long-term activity, which however has potential of a short-term implementation in the marketplace

to be a great opportunity

for Luxembourg and Polish actors from the space sector to exchange their views and experiences and to find partners for cooperation



THE GOVERNMENT
OF THE GRAND DUCHY OF LUXEMBOURG
Ministry of the Economy




MINISTERSTWO
ROZWOJU



GRAND-DUCHÉ DE LUXEMBOURG
Ambassade en Pologne



Ambasada
Rzeczypospolitej Polskiej
w Luksemburgu

Luxembourg-Poland 
Chamber of Commerce

polish
luxembourg
chamber of commerce 

PARTNERS



Introduction

by the Ambassador of the Grand Duchy
of Luxembourg to the Republic of Poland,

Mr. Conrad Bruch

Let me start by **warmly congratulating the Luxembourg-Poland Chamber of Commerce** (LPCC), a highly dynamic and successful team, which has succeeded in record time to establish itself as a business bridge between Luxembourg and Poland. If LPCC would not exist already, it would have to be invented urgently. Together with its sister organization Polsko-Luksemburska Izba Gospodarcza (PLIG) in Poland, LPCC has become an indispensable partner for the Luxembourg Embassy in Warsaw and our own efforts at economically promoting Luxembourg in Poland.



As we all know, **diplomacy is very much about contacts and networking**. I should add that this is even more the case for economic diplomacy. For a small institution like the Luxembourg Embassy in Warsaw, it is highly valuable to be able to use the contacts of both LPCC and PLIG for our own work. In fact, both bilateral Chambers of Commerce have become a force multiplier for us. Thanks to LPCC and PLIG, we are in a much better position to help in developing business ties between in Luxembourg and Poland.

I am very much looking forward to 5 December 2019, when we will host at the Luxembourg Embassy in Warsaw our joint Second Luxembourg-Poland Business Conference on the subject: "Luxembourg-Poland Partnership in Space Business". A very impressive number of (wo-)man-hours have gone into the preparation of this high-level conference, which is the first of its kind. All those who have contributed – in both Luxembourg and Poland – to the preparation of this event, **deserve our warmest thanks**.

The conference logically follows from the signing on 12 October 2018, by the Grand Duchy of Luxembourg and the Republic of Poland, of a Memorandum of **Understanding to start bilateral cooperation on space activities with particular focus on the exploration and utilization of space resources**. The signatories were the Luxembourg Vice-Prime Minister and Minister of the Economy, Mr. Étienne Schneider, and the Polish Minister of Entrepreneurship and Technology, Mrs. Jadwiga Emilewicz.

I am confident that our conference will be **a great opportunity for Luxembourg and Polish actors from the space sector** to exchange their views and experiences and to find partners for cooperation.



Na zakończenie chciałbym jeszcze raz pogratulować LPCC i złożyć najlepsze życzenia dalszych sukcesów. Z niecierpliwością **czekam na kontynuację naszej znakomitej współpracy w służbie rozwoju więzi gospodarczych** pomiędzy Luksemburgiem a Polską.

Agenda

8:30-9:00 **Registration.** Coffee and refreshments

9:00-9:30 **Introduction**

Welcome by **H.E. Mr. Conrad Bruch**, Ambassador of the Grand Duchy of Luxembourg to the Republic of Poland / Welcome by **Mr. Artur Sosna**, President of the Luxembourg Poland Chamber of Commerce (LPCC) / Welcome by **Mr. Krzysztof Bramorski**, Honorary Consul of the Grand Duchy of Luxembourg in Lower Silesia, President of the Poland Luxembourg Chamber of Commerce (PLIG) / Keynote speech by **H.E. Mr. Etienne Schneider**, Vice-Prime Minister and Minister of the Economy of the Grand Duchy of Luxembourg / Keynote speech by **H.E. Mrs. Jadwiga Emilewicz**, Minister for Economic Development of the Republic of Poland

9:30-10:45

SCIENCE AND TECHNOLOGY PANEL

Panelists (in alphabetical order):

Mrs. Joanna Baksalary, ITTI

Mr. Jędrzej Kowalewski, Founder and Chief Executive Officer, Scanway

Mrs. Inna Uwarowa, CEO, In-Space Services

Mr. Mateusz Wolski, President, PIAP

Moderation: **Mr. Radek Grabarek**, Founder, We Need More Space

10:45-11:15 Short presentations by academic institutions

11:15-12:45

STRATEGY AND INVESTMENT PANEL

Panelists (in alphabetical order):

Ms. Sarah Fleischer, Economic Advisor, Luxembourg Space Agency (LSA)

Mr. Błażej Gładysz, Senior Associate, Arendt and Medernach

Mr. Gareth Keane, Partner, Promus Ventures

Mr. Sebastian Straube, Founder and Chief Executive Officer, Interstellar.ventures

Moderation: **Mr. Fabrice Testa**, Chief Executive Officer, Luxembourg Space Tech Angels

12:45-13:00 **Conference Summary** and Conclusions

13:00-15:00 **Networking** luncheon reception

Conference Special Guests



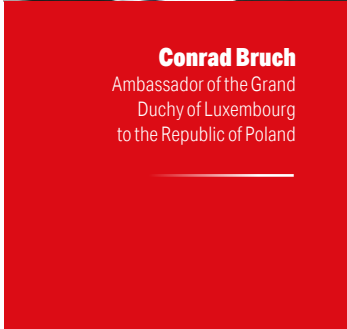
Etienne Schneider

Deputy Prime Minister
and Ministry of the Economy,
the Grand Duchy of Luxembourg



Jadwiga Emilewicz

Minister for Economic
Development,
the Republic of Poland



Conrad Bruch

Ambassador of the Grand
Duchy of Luxembourg
to the Republic of Poland



Piotr Wojtczak

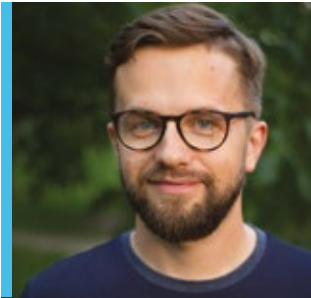
Ambassador of the Republic
of Poland in Luxembourg



Conference **Panelists** **and Moderators**

Science and Technology Panel

M O D E R A T O R



Radek Grabarek

Founder of We Need More Space

Tech journalist, for many years he explained the complexities of information technology – first at Gazeta.pl, and then in Barcelona's startups. Always fascinated with astronomy, space exploration and astronautics. Founder of We Need More Space news website, where he shares his passion to space and explains secrets of the universe. Organizer of popular science meetups all around Poland: Warsaw, Cracow, Szczecin & Łódź.

P A N E L I S T S



Joanna Baksalary, Ph. D.

Head of the Space Area, (ITTI) Sp. z o.o.

Joanna Baksalary graduated in 2006 obtaining her M.Sc. in applied informatics from the Adam Mickiewicz University, Poznań, Poland. Six years later she obtained her Ph.D. in quantum computing from the same university. Since 2006 she worked at ITTI Sp. z o.o. as a project manager and researcher and in 2014 she became the head of the space area. Joanna participated in a number of national and international projects, inter alia for the European Space Agency and European Commission.



Inna Uwarowa

CEO, In-Space Services Sarl

Inna Uwarowa graduated with a master's degree from the Faculty of Power and Aeronautical Engineering at Warsaw University of Technology. For 2,5 Inna was the first manager of ESA ESERO-Poland at Copernicus Science Centre. Since 2012 Inna has been the project manager of the student satellite project "PW-Sat2", which had been launched into orbit in 2018. Since 2015 had been a business development manager at Future Processing and a part of technical authority at FP Space consortium. Currently she's leading In-Space Services in Luxembourg.



Jędrzej Kowalewski

CEO, Scanway Sp. z o.o.

CEO and founder of Scanway company, which focuses on optical payloads for science, aerospace and industry. Innovator of several space measurement solutions such as DREAM experiment measurement method. Space community enthusiast. Specialist in the space industry and remote measurement systems. Together with Scanway, he is currently implementing ScanSAT – micro-satellite to demonstrate multispectral high-resolution imaging and laser telecommunication capabilities in one agile space optical payload.

Mateusz Wolski

Managing Director, PIAP Space Sp. z o.o

He is president of the PIAP Space board – a Polish aviation and aerospace sector company specializing in the field of robotics and technological instrumentation for the production and testing of satellites (MGSE). The company is working for clients such as Thales Alenia Space, Airbus, OHB, ESA and DLR.

Conference **Panelists** **and Moderators**

Strategy and Investment Panel

M O D E R A T O R



Fabrice Testa

Co-Chairman, Luxembourg Space Tech Angels (LSTA)

Fabrice is an exponential thinker, futurist, tech entrepreneur, business angel, trusted advisor, public speaker and sought mentor who successfully founded, co-founded or participated in the launch of multiple companies which created hundreds of jobs and generated multi-million revenues. He is the Co-Chairman of the Luxembourg Space Tech Angels association, and a Senator representing Luxembourg at the World Business Angels Investment Forum. Fabrice is an Aerospace Engineer with several complementary studies in Economics from MIT and Berkeley.

P A N E L I S T S



Sarah Fleischer

Economic Advisor Luxembourg Space Agency (LSA)

Sarah Fleischer is the Economic Advisor at LSA. She is developing new financial solutions to meet the needs of the growing space ecosystem in Luxembourg, such as the forthcoming Space Fund. Before joining LSA, Sarah Fleischer was co-founder of two start-ups. She led her university's first Hyperloop team, which won Elon Musk's SpaceX Hyperloop Pod competition for four consecutive years. Sarah Fleischer studied Mechanical Engineering at the Technical University of Munich and finished her Master's Degree at Harvard Business School.



Blazej Gładysz

Senior Associate Corporate Law, M&A, Arendt & Medernach SA

Błażej Gładysz is a Senior Associate in the Corporate Law, M&A practice of Arendt & Medernach. He focuses specifically on the sector of space, telecommunications and new technologies. Prior to joining Arendt & Medernach, he worked in the legal department of SES Astra in Luxembourg. Błażej is also a member of the Space Generation Advisory Council. He holds a master's degree in Space and Telecommunications Law from the University Paris Sud and a degree in European Law from the University Paris I Panthéon-Sorbonne. Languages: English, French and Polish.



Gareth Keane

Partner, Promus Ventures

Gareth Keane is a Partner with Promus Ventures, splitting his time between the San Francisco Bay Area and Europe. Promus funds companies shaping the future in areas like robotics, AI/ML, space, and synthetic biology. Prior to joining Promus Ventures, he worked at Qualcomm Ventures. Gareth has an MBA from The Wharton School of The University of Pennsylvania, and he holds a PhD in Electronic Engineering from The Queen's University of Belfast (UK) and a BE in Electronic Engineering from the National University of Ireland, Galway. Gareth is also a Kauffman Fellow.



Sebastian Straube

Founder and CEO of Interstellar Ventures

Sebastian is dedicated to grow the global New Space Ecosystem by supporting entrepreneurs in the creation of new ventures and markets for the In-Space Economy. He is a business mentor in leading international technology startup acceleration programs like MIT Enterprise Forum Warsaw and Singularity University Ventures in Mountain View. Before Interstellar Ventures, he served as the Chairman of the Responsible Business Institute and was a Member of the Responsible Investments Working Group, established by the former President of the European Council, Donald Tusk.

About the LPCC

The Luxembourg-Poland Chamber of Commerce (LPCC) was established in 2012 in the Grand Duchy of Luxembourg as a non-profit organization in order to strengthen business relations between Poland and Luxembourg.

Currently, the LPCC has over 60 corporate and over 40 private members, thus being one of the biggest chambers of commerce in Luxembourg. Each year the LPCC organises about 12 business events, most in Luxembourg, with some held in the Embassy of the Grand Duchy of Luxembourg in Warsaw, Poland.

Luxembourg-Poland
Chamber of Commerce



We are The Business Bridge

between Luxembourg and Poland



The LPCC Board



Artur Sosna
President



Adam Tymofiejewicz
Vice-President



Grzegorz Peczkowski
Board Member



Aleksandra Wróbel
Board Member

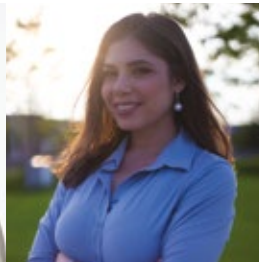
Our Team



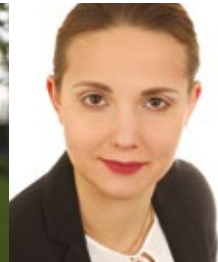
Renata Plewniak
Director



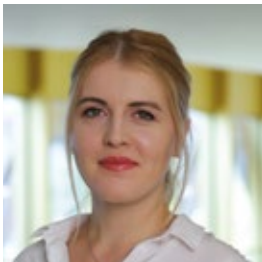
Marta Andrzejewska
Senior Project Manager



Valeria Pezzino
Administrative Assistant



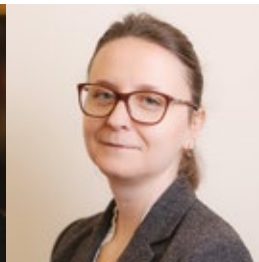
Maria Szczepara
Social Media Manager



Loredana Plesca
Event Coordinator



Anika Chojnacka
Independent Advisory Board



Agnieszka Noel-Druzd
Independent Advisory Board

The LPCC Advisory Board Members



Paweł Wróblewski
Partner, KPMG



Marie-Hélène Massard
CEO AXA, Luxembourg



John Parkhouse
Managing Partner,
PWC Luxembourg



Jean-Marc Crepin
Managing Partner,
Brown Brothers Harriman,
Luxembourg



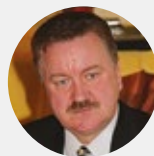
Jean-Marc Ueberecken
Managing Partner,
Arendt & Medernach



Jeannot Erpelding
Director International
Affairs, Chamber of Commerce,
Luxembourg



Prof. Dr Franck Leprévost
VP Organization
& Intl. Relations
University of Luxembourg



Dr Donat Jagiello
Director, Colmet,
Luxembourg



Marcel Goeres
President Goeres Group,
Luxembourg



Raymond Krawczykowski
Tax Leader, Deloitte,
Luxembourg

LPCC Honorary Members



Conrad Bruch
**Ambassador of
Luxembourg to Poland**



Bartosz Jałowiecki
**Former Ambassador
of Poland to Luxembourg**



Georges Faber
**Former Ambassador
of Luxembourg to Poland**

The LPCC Experts



Fryderyk Rdultowski
Docler Holding Luxembourg
Expertise area: Finance



Inna Uwarowa
CEO, In-Space Services
*Expertise area: Space industry,
Space system engineering,
New space*



Jean-Marc Ueberecken
Arendt & Medernach



William R. Watson
Value4Capital



Raymond Krawczykowski
Deloitte
Expertise area: Tax & Consulting



Anna Stolarz
Winged IT
*Expertise area:
IT Recruitment*



Krzysztof Gogol
WealthArc
*Expertise area: Wealth
Management Software*



Paweł Wróblewski
KPMG
*Expertise area: Alternative
Investments (Real Estate,
Private Equity, Infrastructure)*



Piotr Kozikowski
PWC
*Expertise area: private equity,
real estate, international tax,
funds*



Antoine Clasen
Bernard&Massard
*Expertise area: wine, crémant,
sales and marketing*



Christian Tailleux
Totalserve
*Expertise area: Domiciliation
& Management Services*



Przemysław Bielicki
Royalton Partners
*Expertise area: Private equity, real
estate, infrastructure investing;
structuring of private funds*



Patrick Berg
Domaines Vinsmoselle
*Expertise area: Development,
Marketing, Management*



Paweł Hermeliński
Dentons, Luxembourg
*Expertise area: corporate, mergers
and acquisitions, private equity,
cross-border transactions*



Márton Fülöp
Docler Holding Luxembourg
*Expertise area: IT, Startups,
Recruitment and Project
Management*



Marcin Mirek
ZET Transport
*Expertise area: transport,
logistics, account management*



Elisabeth Kempa
Counsel
*Expertise area: Intellectual Property
& General Commercial, Litigation*



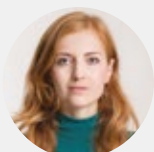
Catharina Biver
Spax Factory
*Expertise area: Executive Coach,
Training Facilitator, Team Builder
and Workshop Designer*



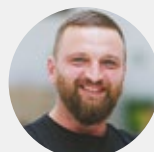
Christoph N. Kossmann
IQ-EQ
*Expertise area: Corporate
Administration, Global Accounting
& Consolidation, Fund Administration*



Monika Zdziarska-Alicka
Essence Accounting Office
Expertise area: Accounting



Darina Mohamad
**NautaDutilh Avocats
Luxembourg S.à r.l.**
*Expertise area: Legal: Investment
Funds, Banking, Corporate, Taxation,
Employment, IP, ICT, litigation,
Insurance*



Filip Maksymilian Bloch
Co-Founder & CEO Hotailors
*Expertise area: sales and
hotel industry, new technologies
driving the travel industry, startups*

LPCC Corporate Members

CORPORATIONS



alterDomus*

AMPLEXOR



ATOZ
TAX ADVISERS
LUXEMBOURG



BROWN
BROTHERS
HARRIMAN



Deloitte.



**DOMAINES
VINSMOSELLE**
LUXEMBOURG

EXPERTA

EY
Building a better
working world

gremi
INTERNATIONAL

GSK STOCKMANN


Hotailors

ING 

Intertrust

IQEQ

KPMG

LEAWARE


POLISH AIRLINES
LOT

LOYENS LLOEFF

 **MDO**

metrosoft

● **NautaDutilh**
AVOCATS LUXEMBOURG

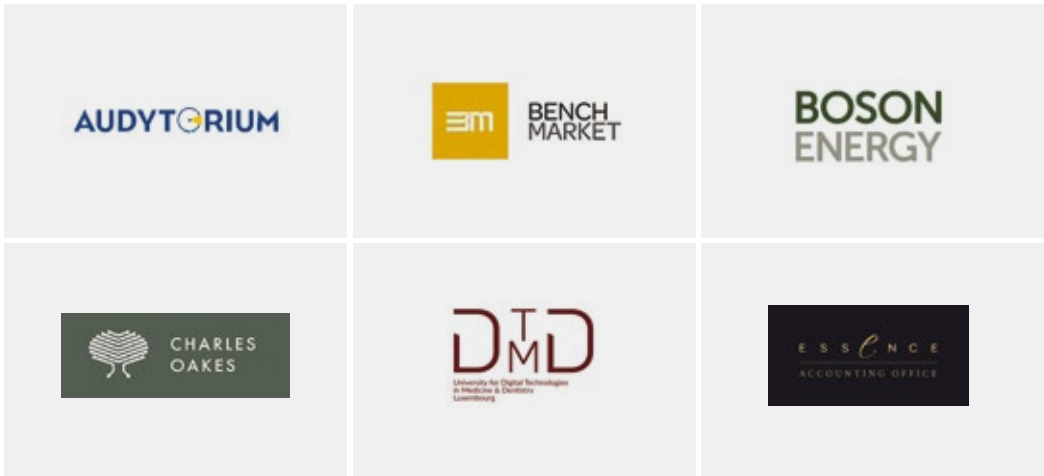
 **OLEŚ &
RODZYŃKIEWICZ**
Radomski Partner

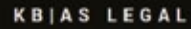
 **Post** Telecom
LUXEMBOURG PSF



LPCC Corporate Members

SMB (SMALL AND MEDIUM SIZE BUSINESSES)





Make new connections, build and expand business relationships:

THROUGH NETWORKING



Access to over 60 Corporate Members
cooperating with several thousand businesses



Access to international board-level business
and government decision-makers



Access to our high-quality networking and VIP events



Support for the import and export industries



Interact with well-known international experts



Acquire and share knowledge

GAIN VISIBILITY



Promote your business via our newsletter



Active promotion through our website and social media



Engage as a speaker



Become a partner or sponsor of our yearly around



12 annual events across both countries

Join us

and we will make sure you get the best
out of your corporate or private membership



<https://lpcc.lu/members/applications/>



LPCC Events

| | | |
|------|--------------|---|
| 2019 | 12 November | General Assembly and Entrepreneurial Woman Awards |
| | 28 November | Meet Up <i>Individual presentation of LPCC Corporate Members</i> |
| 2020 | 5 December | 2nd Luxembourg-Poland Business Conference <i>Partnership in space business</i> |
| | 23 January | Meet Up <i>Individual presentation of LPCC Corporate Members</i> |
| | 27 February | Meet Up <i>Individual presentation of LPCC Corporate Members</i> |
| | 18 March | The Spring Business Lunch <i>By Invitation Only</i> |
| | 26 March | Meet Up <i>Individual presentation of LPCC Corporate Members</i> |
| | 30 April | Meet Up <i>Individual presentation of LPCC Corporate Members</i> |
| | 28 May | Meet Up <i>Individual presentation of LPCC Corporate Members</i> |
| | 4 June | The Summer Business Party <i>By Invitation Only</i> |
| | 25 June | Meet Up <i>Individual presentation of LPCC Corporate Members</i> |
| | 24 September | Meet Up <i>Individual presentation of LPCC Corporate Members</i> |
| | 26 September | Entrepreneurial Woman Project <i>Six Saturdays Training</i> |
| | 22 October | Meet Up <i>Individual presentation of LPCC Corporate Members</i> |
| | 09 November | General Assembly and Entrepreneurial Woman Awards |
| | 26 November | Meet Up <i>Individual presentation of LPCC Corporate Members</i> |
| | 3 December | 3rd Luxembourg Poland Business Conference <i>Subject to be announced</i> |

For more information visit our website

Also find us on



www.lpcc.lu



[/lpbc.lu](https://www.facebook.com/lpbc.lu)



[/company/5355090](https://www.linkedin.com/company/5355090)